

INVESTOR DAY 2021

Sustainability

Cheryl Chan

Group Chief Strategy and Sustainability Officer

16 November 2021

Disclaimer

Amounts stated in this presentation are denominated in Singapore Dollars unless stated otherwise.

The forward-looking statements in this presentation reflect the Company's current intentions, plans, expectations, assumptions and beliefs about future events. Actual future performance, outcomes and results may differ materially from those expressed in forward-looking statements as a result of a number of risks, uncertainties and assumptions especially given the evolving COVID-19 situation and its impact globally. Representative examples of these factors include (without limitation) travel and border restrictions, governmental orders on business closures, lock-down and movement restrictions, quarantines, disruption to global supply chains, general industry and economic conditions, interest rate trends, cost of capital and capital availability, competition from other companies and venues for the sale/distribution of goods and services, shifts in customer demands, customers and partners, changes in operating expenses, including employee wages, benefits and training, and governmental and public policy changes, as well as natural disasters which may negatively impact business activities of the ST Engineering Group.

You are cautioned not to place undue reliance on these forward-looking statements, which are based on the current view of management on future events.

Global trends shaping the role of sustainability in businesses



Global Warming



Resource Scarcity



Energy Transition



Urbanisation

Business Implications



Increase
decarbonisation
effort



Develop
energy efficient
infrastructures



Leverage
technology to
improve response

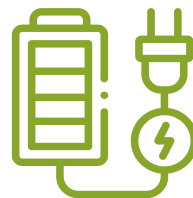


Business
continuity

Our approach to sustainability-linked revenue



Reduce GHG emissions



Solve urban and city issues



Circular economy

Enabling Our Customers

Our products and solutions begin with sustainability in mind

Energy Management

Smart Cities

- IoT
- Smart Utilities & Buildings
- Waste & Water Treatment

Congestion Management

Smart Cities


- ITS (Road/Rail)
- Tolling Solutions
- Congestion Pricing

Decarbonisation

- Passenger-to-Freighter Conversion
- Engine Eco-wash
- Nacelles

Digital Solutions

- Robotics & Automation
- Connectivity
- Training & Simulation



Sustainability-linked revenue

Enabling Our Customers: Commercial Aerospace

P2F conversions reduce environmental impact and improve asset efficiency



Useful Life Extension

Recycling passenger aircraft to freighters for 2nd lease of life



Automation

Increase productivity and reduce material consumption



New generation, Fuel efficient Aircraft

Replacement of old freighters with newer converted freighters



One-stop Solution

Reduce aircraft downtime and improve operational flexibility

Benefits:

Optimising asset utilisation and creating customer value in a sustainable way

Enabling Our Customers: Smart Mobility & Smart Street Lighting

Reduce urban traffic congestion & enable smart street lighting with our smart integrated solutions and predictive maintenance capabilities



Urban Traffic Management

>20% reduction in traffic congestion



Incident detection, advisory & enforcement

>50% reduction in incident handling time



Intelligent control

Energy efficient, cost effective street lighting



Motion sensing, on-demand lighting

Wireless network sensors saves >15% energy on top of LED savings

Enabling Our Customers: Marine

DigiShip: Design and build more sustainable vessels for the future

Green Ship

↓ GHG emissions with higher power and energy efficiency

Connected Ship

Enhanced connectivity with robust cybersecurity systems

Autonomous Operations

Reduce manpower and physical loading needs

Smart Maintenance

Increase ship availability and maintenance flexibility



Enabling Our Customers: Training & Simulation Systems

Reduce consumption of resources and GHG emissions for live events through digitalisation



Significant reduction in GHG emissions versus live training



Value-add **training flexibility** regardless of weather conditions

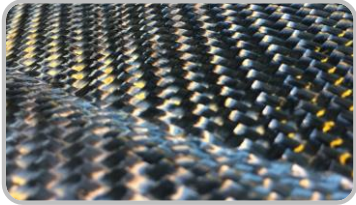


Advanced simulation systems capable of modelling and simulating large scale real-life scenarios

Enabling Our Customers: New Opportunities

Exploring new opportunities in sustainability

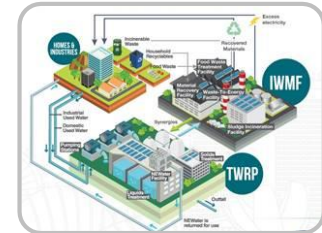
Materials



Products



System Solutions



Doing Our Part

Manage our environmental footprint and build trust with our community

Doing our part



Environment



Social



Governance



Sustainability is value creation and core to our business



Seize new opportunities in sustainability and enable customers to benefit through our products and solutions



Continual efforts to **halve GHG emission levels by 2030** and have **purposeful engagement** with the community



Committed to **Doing our Part** and **Enabling our Customers** in our sustainability journey

Our Corporate Purpose

**Harnessing technology and
innovation to enable a more
secure and sustainable world**

Thank you